

# SUMMER INTERNSHIP 2022

Join our 10-weeks paid internship, starting 18th of July 2022, with the possibility to develop the Bachelor Thesis with Baumann afterwards. You will have the opportunity for practical work with Staubli robots and Beckhoff PLC programming, guided by our specialists.

Send your application to [dan.negrea@baumann-automation.com](mailto:dan.negrea@baumann-automation.com)

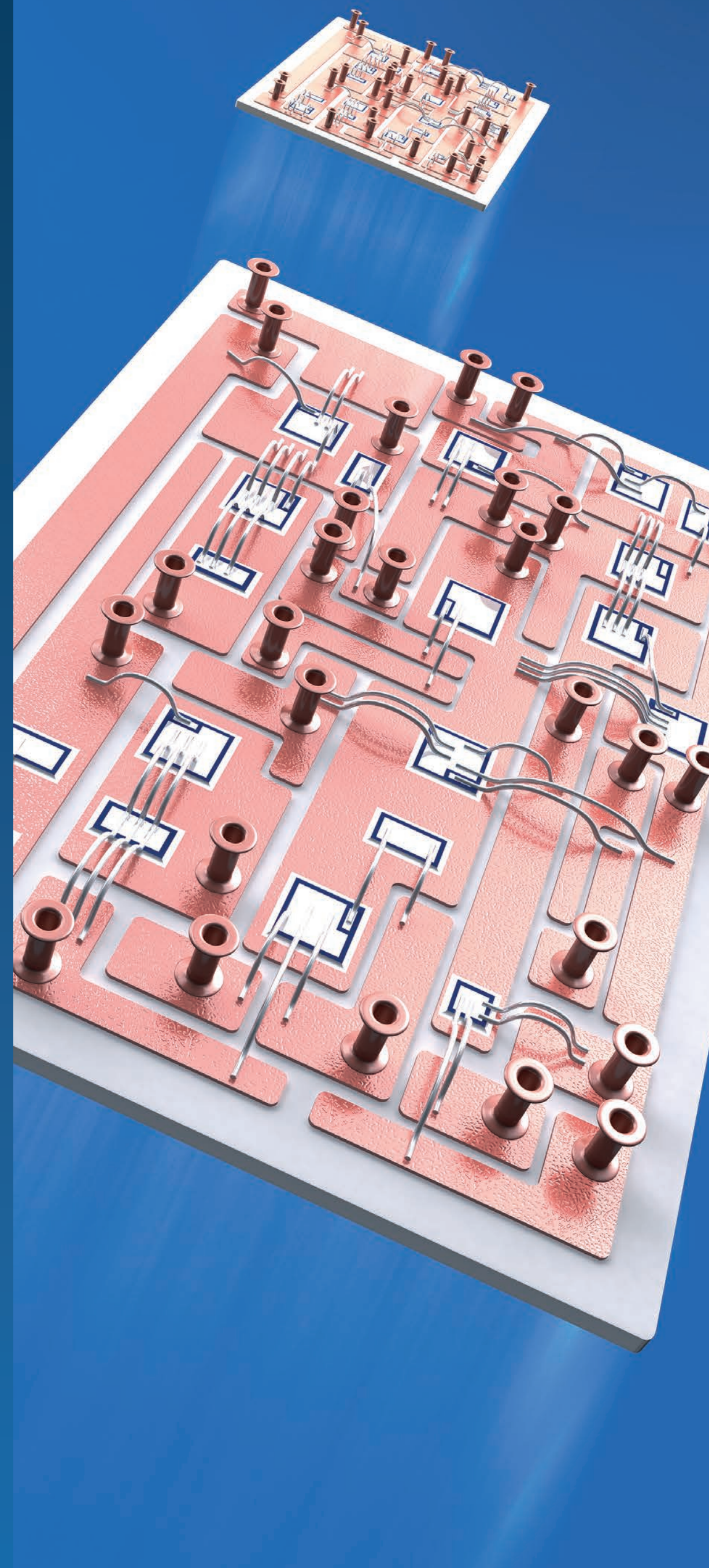
AUTOMATION

# baumann

## Solutions for Autonomous Driving



## Solutions for Power Electronics



## Solutions for Loading Systems



## Solutions for Industry 4.0



## Solutions for Systemintegration



## Solutions for E-mobility



Baumann develops and produces turn-key automation systems for customers from various international industries including the automotive suppliers, electronics and domestic appliances. Everything from a single source – from a stand alone robot cell to a fully automated production line.

With over 35 years of experience Baumann knows the market and recognises the latest trends and developments in industrial production, providing you with flexibility and efficiency gains and a competitive advantage in your industry. Future-oriented tasks such as autonomous driving, e-mobility, digitization or Industry 4.0 are the focus of Baumann's work.

Today, the family-owned company employs over 600 people at its headquarters in Amberg. Service centers in China, Romania, Taiwan, the Philippines, the USA and Mexico ensure customer proximity worldwide. More than 4,000 robot cells and production plants are in use worldwide by customers in 22 countries. With an annual turnover of 90 million euros and an office and production area of more than 20,000 square meters, Baumann Automation sets up for the future.

### S.C. Baumann Automation S.R.L.

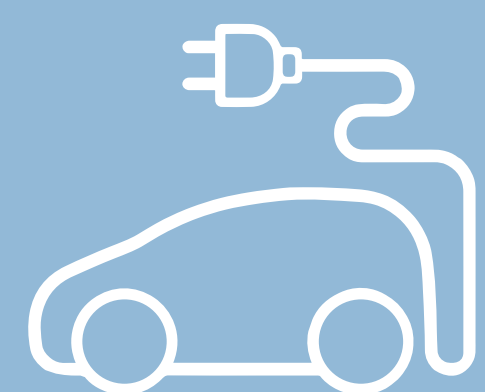
Str. Traian Vuia nr. 141C  
400396 Cluj-Napoca  
Romania

Contact: Dan Negrea  
[dan.negrea@baumann-automation.com](mailto:dan.negrea@baumann-automation.com)  
Phone +40 264 480 320  
Mobile +40 760 139 902

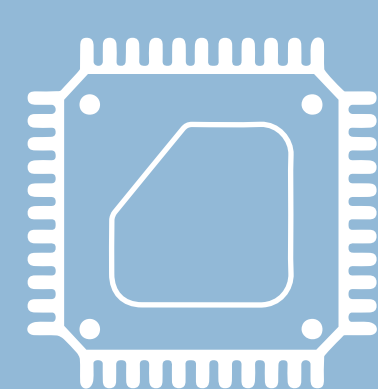




Autonomous driving



E-mobility



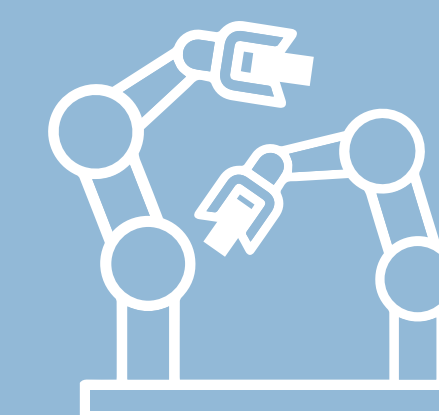
Power electronics



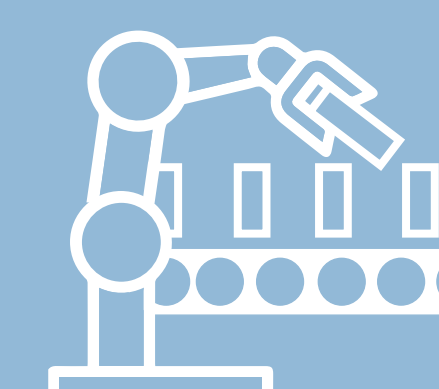
Battery



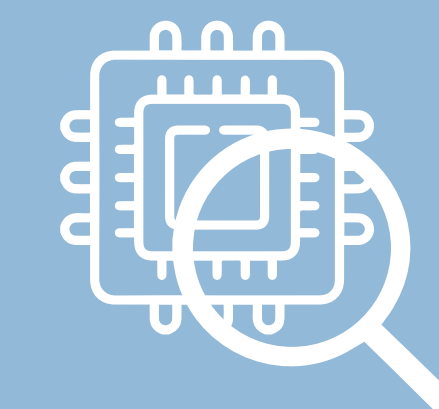
Industry 4.0



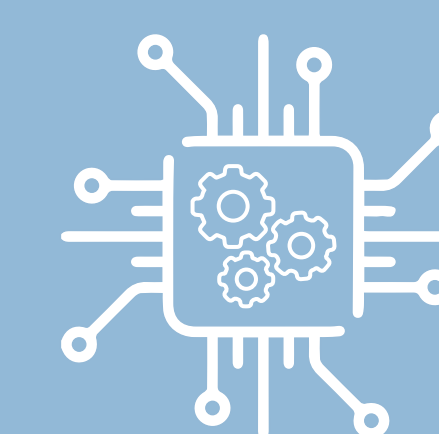
Assembly



Loading systems



Testing



System integration

PARTS	ROBOT	FUNCTION	GRAP	FEED BOX	OBJECT	MODULE	BAUMANN			
<p>OBJECT #892ABC-3061</p>			<p>OBJECT #300EC-5941</p> <p>Baumann liefert seit mehr als 30 Jahren Montagesysteme an First-Tier-Supplier und Tier-N-Supplier. Wir erarbeiten mit unseren Kunden die optimalen Automations-systeme in Bezug auf Kosten, Qualität und Flexibilität – und dies im typischen Projekt-geschäft der Automobilbranche.</p>	<p>OBJECT #678AC-3021</p>	<p>DESCRIPTION OF OBJ: #AC50</p> <p>Bei der Fertigung von Platinen werden im Auto-motive-Bereich, in der Telekommunikation oder zum Beispiel in der Elektronikindustrie Baugrup-pen nebeneinander auf größeren Trägereinheiten, sogenannten Nutzen, produziert.</p> <p>Baumann bietet neben dem speziellen Know-how im Bereich Beladen, Pick &amp; Place und Entladen auch umfassendes Expertenwissen auf dem Gebiet der Vereinzelung von Leiterplatten.</p> <p>Mit der rout box und der del box stellen wir Ihnen zwei standardisierte und wirtschaftliche Lösungen auf dem Sektor der Platinen-Vereinzelung zur Ver-fügung.</p> <p>In der Baumann rout box arbeitet ein Fingerfräser, der auf einem freiprogrammierbaren Achssystem die verschiedensten Formen von Leiterplatten vereinzelnd kann.</p>	<p>OBJECT #I-O5-8763</p>	<p>IMG #650FA-210</p>	<p>OBJECT #X-O3-29543</p>	<p>OBJECT #DE-O8-AE60-45</p>	<p>OBJECT #FF-12-DF-494215</p>
<p>DESCRIPTION OF OBJ: #3021</p> <p>Die Baumann feed box ist eine flexible Roboter-plattform für das Beladen und Entladen von Bear-beitungsmaschinen. Die Bauteilübergabe erfolgt direkt oder indirekt in das Bearbeitungs-nest. Die feed box kann stand-alone oder inline betrieben werden und ist für Roboter und Portalsysteme geeignet.</p> <p>Baumann Automation bietet seinen Kunden per-fekte Lösungen für automatisierte Qualitätskon-trollen, die bei laufender Produktion die ferti-gungsbezogenen Parameter kontrollieren und mögliche Fehlerquellen zeitnah erkennen.</p>										

Baumann develops and produces turn-key automation systems for customers from various international industries including the automotive suppliers, electronics and domestic appliances. Everything from a single source – from a stand alone robot cell to a fully automated production line.

With over 35 years of experience Baumann knows the market and recognises the latest trends and developments in industrial production, providing you with flexibility and efficiency gains and a competitive advantage in your industry. Future-oriented tasks such as autonomous driving, e-mobility, digitization or Industry 4.0 are the focus of Baumann's work.

Today, the family-owned company employs over 600 people at its headquarters in Amberg. Service centers in China, Romania, Taiwan, the Philippines, the USA and Mexico ensure customer proximity worldwide. More than 4,000 robot cells and production plants are in use worldwide by customers in 22 countries. With an annual turnover of 90 million euros and an office and production area of more than 20,000 square meters, Baumann Automation sets up for the future.

**S.C. Baumann Automation S.R.L.**

Str. Traian Vuia nr. 141C  
400396 Cluj-Napoca  
Romania

Contact: Dan Negrea  
dan.negrea@baumann-automation.com  
Phone +40 264 480 320  
Mobile +40 760 139 902